

2006 supplements to

The

CALL BOOK

for MATCH RACING

for 2005 – 2008

International Sailing Federation

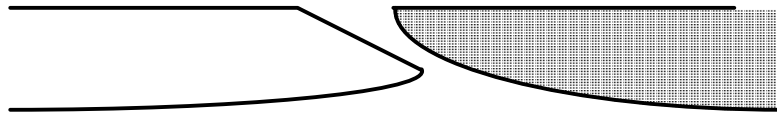
Front or back pages have been added for easy inserts to the 2005 Call Book.

CALL UMP 7

Definitions Keep Clear

Question

When Blue, a keep-clear boat, passes her bow over Yellow's transom, is Blue keeping clear?



Answer

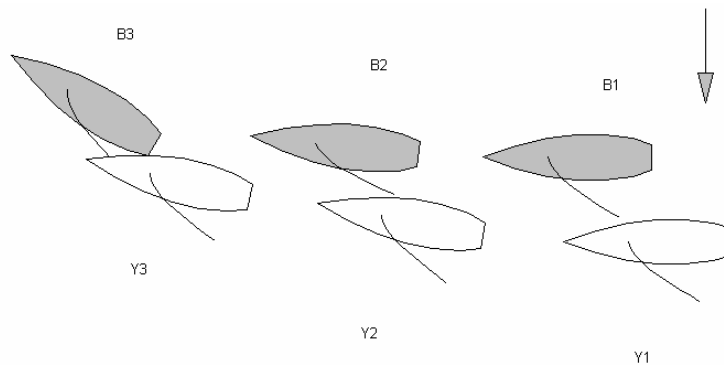
Yes.

CALL UMP 9

Rule 11	On the Same Tack, Overlapped
Rule 16.1	Changing Course
Rule 17.1	On the Same Tack; Proper Course
Definitions	Keep Clear and Proper Course

Question 1

Yellow and Blue are sailing parallel courses. Rule 17.1 does not apply. Blue has adequate room to move away but nevertheless maintains a parallel course. After about 10 seconds Yellow luffs slowly and from the moment the luff starts, there is no longer any means of Blue avoiding Yellow. Blue luffs and there is contact. There is a Y flag. What should the call be?



Answer 1

When Blue has had an opportunity to keep clear but then sails so close to Yellow that any luff by Yellow will result in contact, Blue fails to keep clear and breaks rule 11. Penalize Blue.

Question 2

Would the answer be different if Blue came down, or Yellow sailed a slightly higher course thereby causing the separation between the boats to decrease?

Answer 2

No.

Question 3

Yellow and Blue are sailing downwind on starboard tack. Yellow establishes an overlap one and a half hull lengths to leeward of Blue. Yellow luffs slowly clearly above a proper course. Blue keeps her course and there is contact. There is a Y flag. What should the call be?

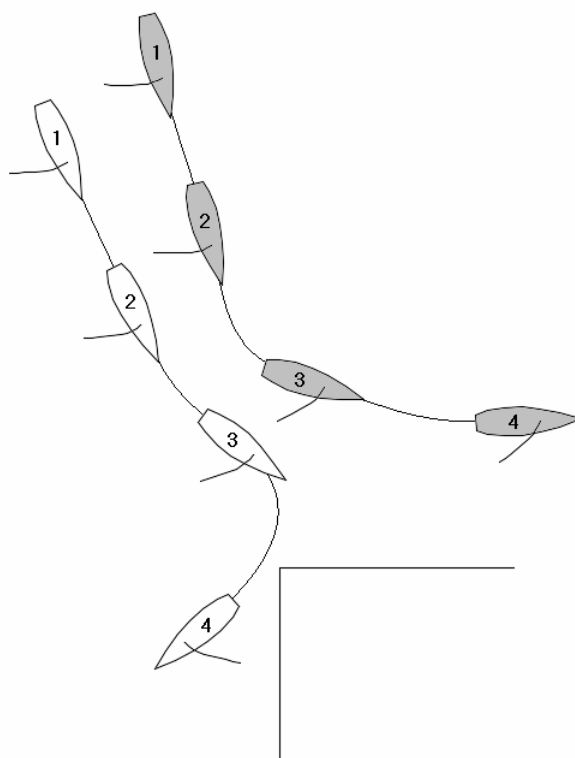
Answer 3

Penalize Blue and Yellow. Blue breaks rule 11 and Yellow breaks rule 17.1.

choose to luff or bear away as she pleases provided she complies with rule 16.1. If Yellow and Blue bear away to pass the obstruction to port, Yellow must give room to Blue while the boats are overlapped. If Blue becomes clear astern, she must comply with rule 18.5. In the situations shown, no rules are broken. Display the green and white flag.

Question 2

In the pre-start, Blue and Yellow overlapped on port tack approach the outer end of a dock. Before the boats are about to pass the obstruction on the same side, Yellow, to leeward, luffs slightly and Blue keeps clear. Yellow suddenly bears away, leaving the obstruction to port. Blue leaves the obstruction to starboard. There is a Y flag. What should the call be?



Answer 2

Yellow has right of way and is not the outside boat. Therefore, she can choose to luff or bear away as she pleases provided she complies with rule 16.1. Display the green and white flag.

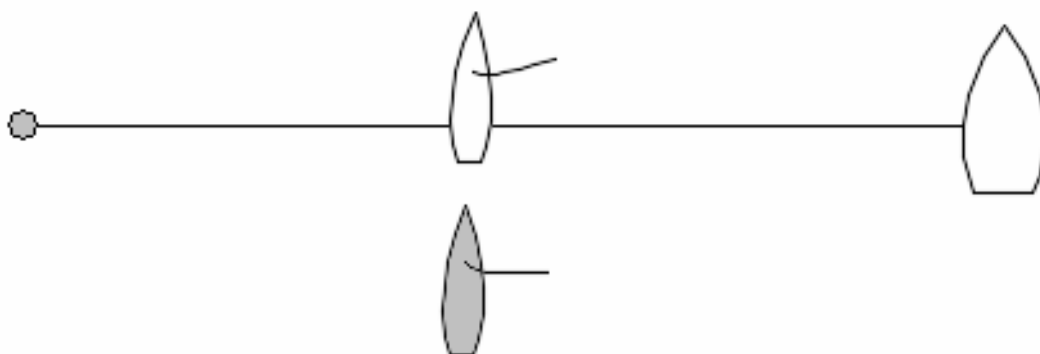
CALL UMP 38

Rule 12	On the Same Tack, Not Overlapped
Rule 20.3	Moving Astern
Definitions	Clear Astern and Clear Ahead; Overlap

Question

In the pre-start, Blue and Yellow are both on the same tack with Yellow clear ahead. Both boats start moving astern by backing their sails and are still not overlapped.

Which boat has the right-of-way?



Answer

Rule 20.3 does not apply, because both boats are moving astern by backing a sail. According to the definition Blue is clear astern and therefore required by rule 12 to keep clear.

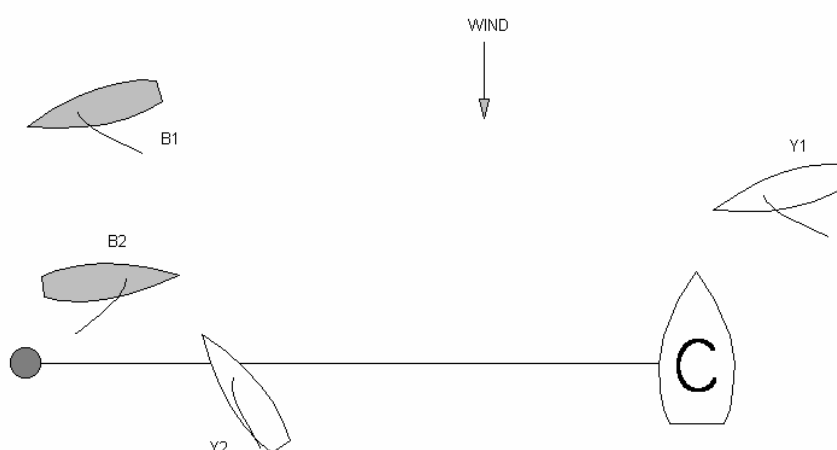
Whether one boat is clear astern of another or overlapped with her does not depend on the direction of motion of either boat.

CALL MR 1

Rule C4.1 **Requirements Before the Start**
Rule C4.2 **Requirements Before the Start**

Question 1

Blue is not outside her assigned end of the starting line at the preparatory signal. As a result Yellow is able to prevent her from crossing the line within the two-minute period. Blue did not cross the line from the course side before starting. What should the umpires do?



Answer 1

Impose two penalties on Blue. One is for breaking rule C4.1, because she was not outside her assigned end; the other is for breaking rule C4.2, because she did not cross the line from the course side within the two-minute period. These rules were broken in two separate incidents, and therefore each requires a penalty.

Question 2

If a boat has not crossed within the two-minute period, is she still obligated to cross before starting?

Answer 2

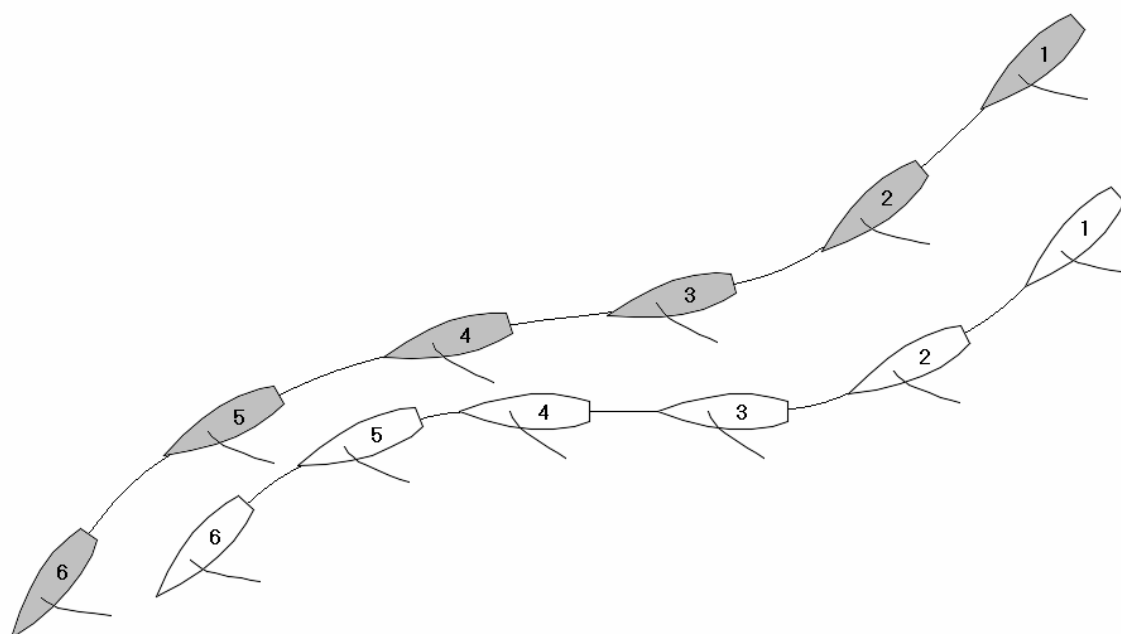
No. Although she has broken rule C4.2, there is no requirement that she cross the line after the two-minute period has ended.

CALL MR 39

Rule 11	On the Same Tack, Overlapped
Rule 16.1	Changing Course
Rule C7.2	All Penalties
Rule C7.3(d)	Penalty Limitations
Rule C8.3	Penalties Initiated By Umpires

Question 1

Yellow and Blue are sailing downwind with Blue overlapped to windward of Yellow. Rule 17.1 does not apply. Yellow luffs slowly and Blue responds, but Blue's response is not enough for her to keep clear. There is contact between Blue's spinnaker and Yellow's rigging. Blue is blocking Yellow's wind and she overtakes Yellow. There is a Y flag. What should the call be?



Answer 1

If Blue could have kept clear but either responded too slowly or not enough, then Blue has broken rule 11. Penalize Blue.

If in addition the umpires are satisfied that Blue has broken a rule deliberately or has gained an advantage by breaking the rule after allowing for a penalty, they would give Blue a second penalty under rule C8.3. If the umpires were not satisfied that either of these conditions existed, but are satisfied that Blue gained a controlling position because of the breach, the umpires would give Blue a red flag penalty under rule C8.3. See CALL MR 31.

Question 2

Would the answer be different if the Yellow had an outstanding penalty?

Answer 2

No. However, if Blue was given a red flag penalty under rule C8.3, this would not offset Yellow's outstanding penalty (C7.3(d)). Blue would have to take her penalty as soon as reasonably possible and Yellow would still have an outstanding penalty.

Question 3

Would the answer be different if the boats are getting closer to the finishing line and Yellow has an outstanding penalty?

Answer 3

No. However, in this situation it is more likely that the conditions for a double penalty are met.

If a double penalty has been signalled to Blue, the first penalty will offset Yellow's penalty (C.7.2(e)). Blue will not be recorded as finishing until she completes her second penalty and then finishes (C7.2(d)).